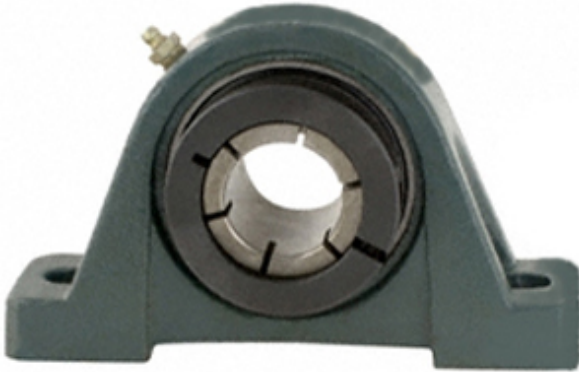




# ECU BEARING LTD



1.688 Inch | 42.875 Millimeter x 2.094 Inch |  
 53.18 Millimeter x 2.313 Inch | 58.75 Millimeter  
 Dodge P2B-DLM-111 Pillow Block Ball Bearing  
 Units

Bearing No. P2B-DLM-111

P2B-DLM-111 Bearing 2D drawings and 3D CAD models

Category	Pillow Block Bearings
Inventory	0.0
Manufacturer Name	ABB MOTORS AND MECHANICAL INC
Minimum Buy Quantity	N/A
Weight	3.246
EAN	0782475890941
Product Group	M06110
Number of Mounting Holes	2
Mounting Method	Concentric Collar
Housing Style	2 Bolt Pillow Block
Rolling Element	Ball Bearing
Housing Material	Cast Iron
Expansion / Non-expansion	Non-expansion
Mounting Bolts	5/8 Inch
Relubricatable	Yes
Insert Part Number	INS-DLM-111
Seals	Single Lip Contact
Housing Configuration	1 Piece Solid
Inch - Metric	Inch
Other Features	Single Row   Medium Duty   Wide Inner Race
Long Description	2 Bolt Pillow Block; 1-11/16" Bore; 2-5/16" Base to Center Height;



## ECU BEARING LTD

	Concentric Collar Mount; Ball Bearing; 6" Minimum Bolt Spacing; 6-11/16" Bolt Spacing Maximum; Relubricatable; Ca
Category	Pillow Block
UNSPSC	31171511
Harmonized Tariff Code	8483.20.40.40
Noun	Bearing
Keyword String	Pillow Block
Manufacturer URL	<a href="http://www.dodge-pt.com">http://www.dodge-pt.com</a>
Manufacturer Item Number	P2B-DLM-111
Manufacturer Internal Number	128827
Weight / LBS	10.1
d	1.688 Inch   42.875 Millimeter
Bolt Spacing Minimum	6 Inch   152.4Millimeter
Bolt Spacing Maximum	6.688 Inch   169.875Millimeter
Nominal Bolt Center to Center	6.3 Inch   160 Millimeter
D	2.094 Inch   53.18 Millimeter
B	2.313 Inch   58.75 Millimeter
Actual Bolt Center to Center	0 Inch   0Millimeter